



CARMARTHEN WORKSHOP 11.07.2023

CONTACT: KERRIE PHIPPS, NATIONAL ALLIED HEALTH PROFESSIONS (AHP) LEAD PRIMARY & COMMUNITY CARE. KERRIE.PHIPPS@WALES.NHS.UK

INTERACTIVE KEY: CLICK ON THESE ICONS TO ACCESS MORE INFORMATION.

AHP ROADSHOW 2023

'TURNING PRIMARY & COMMUNITY CARE INTO THE USUAL LOCATION FOR AHPs'

VISUAL TO SUPPORT NEXT STEPS TO ACHIEVE ALLIED HEALTH PROFESSIONS (AHP) WALES TRANSFORMATION



CONSULTATION WORKSHOPS ACROSS WALES, BUILDING ON 3 NATIONAL AND 7 REGIONAL AHP PROFESSIONAL COLLABORATIVES' WORKSHOPS, TO SUPPORT SOCIALISATION AND OPERATIONALISATION OF THE AHP STRATEGIC PLAN.

- REQUIRE INFRASTRUCTURE TO SUPPORT TRANSFER OF MEANINGFUL DATA TO KNOWLEDGE.
- ENSURE AHPs USE DATA & EVIDENCE BASE TO SHOW ADDED VALUE AND WHOLE SYSTEM IMPACT.
- NEED TO USE DATA MORE EFFICIENTLY; FOCUS RESOURCES TO WHERE GREATEST IMPACT CAN BE ACHIEVED.
- NEED TO EXPLORE HOW DIGITAL CAN PROVIDE USER EXPERIENCE & REPORTED OUTCOMES.
- FOCUS ON AHP DIGITAL OFFERING; INCLUDING DIGITAL INCLUSION THINKING ABOUT INEQUALITIES.



TABLE 1: DATA & DIGITAL AS AN ENabler

Q1. FIVE IMPORTANT MAIN THEMES & FOUR TABLE THEMES EMERGED FROM THE Q1. KEY LEARNING POINTS AND WORKSHOP DISCUSSIONS: **SKILLSETS TO MEET POPULATION NEEDS, OUTCOMES - FOCUSED APPROACH, LEADERSHIP.**

TABLE 2: FOCUS ON PERSON-CENTRED & CO-PRODUCTION

- NEED TO ENGAGE WITH & UNDERSTAND THE VALUE OF CO-PRODUCTION WITH PEOPLE WITH LIVED EXPERIENCE.
- NEED TO FOCUS ON WHAT'S IMPORTANT TO PEOPLE; DELIVERY OF PERSON CENTRED CARE AND SUPPORT.
- NEED TO LINK THIS APPROACH WITH IDENTIFYING THE SKILLS (NOT ROLES) REQUIRED TO MEET PRESENTING NEEDS.
- RAISE AWARENESS & UNDERSTANDING OF AHP VALUE AND IMPACT IN PRIMARY/COMMUNITY CARE.



- ENABLE AHPs TO PROVIDE PREVENTION AND HEALTH IMPROVEMENT ACTIVITIES TO MEET PRESENTING NEEDS.
- ENABLE AHP SKILLSETS TO BE FULLY UTILISED, WHICH MAY MEAN MOVING AWAY FROM TRADITIONAL PATHWAYS WITH LIMITED VALUE AND IMPACT.
- UTILISE ALL STRATEGIC OPPORTUNITIES & AHP PROFESSIONAL COLLABORATIVES TO COMMUNICATE AHP SKILLS, VALUE & IMPACT IN PREVENTION AND HEALTH IMPROVEMENT ACTIVITIES.
- ENSURE LONG-TERM TRANSFORMATION PLANS ARE PRIORITISED.



TABLE 3: FOCUS ON EARLY INTERVENTION & PREVENTION



"WE HAVE A PLACE AT THE TABLE, WE HAVE A VOICE, LET'S USE IT!"

TABLE 4: POPULATION NEEDS TO TRANSFORM PRACTICE

- UNDERSTAND POPULATION DATA AVAILABLE TO TRANSFORM AND FOCUS SERVICES ON WHAT WILL BE THE BIGGEST BENEFIT.
- NEED TO MOVE AWAY FROM TRADITIONAL ROLE BASED 'JD'S TO SKILLSETS TO MEET POPULATION NEEDS.
- THE IMPORTANCE OF COLLABORATIVE WORKING AND COMMUNICATING AHP SKILLSET.
- LOOK AT WHERE AHPs ARE NOW, AND HOW WE CAN BE MORE DIRECTLY ACCESSIBLE BY THE POPULATION, AND AS PART OF WIDER TEAM TO SUPPORT MULTI-PROFESSIONAL WORKING.
- NEED TO BREAK DOWN BARRIERS TO SUPPORT MULTI-PROFESSIONAL APPROACH.



AHP TRANSFORMATION JOURNEY TO ACHIEVE WELL-INTEGRATED SERVICES, ROOTED IN THE COMMUNITY, WITH THE FULL RANGE OF PRACTITIONER LEVELS AND PRUDENT OPTIMISATION OF SKILL SET.



EFFICIENT USE OF DATA WITH AN OUTCOMES-FOCUSED APPROACH; NEED TO IMPROVE SKILLS DEVELOPMENT AND WIDER PARTNERSHIP WORKING TO SUPPORT DATA ANALYSIS.



NEED TO WORK TOGETHER IN A MORE JOINED UP WAY; INCREASE COPRODUCTION & COLLABORATIVE WORKING TO IMPROVE PERSON EXPERIENCE.



NEED TO DESIGN AND DELIVER SERVICES THAT ARE REPRESENTATIVE OF POPULATION NEED AND FOCUS ON WHAT WILL PROVIDE THE MOST VALUE AND IMPACT.



SHIFT FOCUS OF SERVICE TO PREVENTATIVE/EARLY INTERVENTIONS AND COLLABORATIVE WORKING TO OPTIMISE SKILLSETS UTILISED.

Q3. WHAT SUPPORT DO YOU NEED TO PROGRESS AND ACHIEVE THESE ACTIONS?



AWARENESS OF AHP OFFER, SKILL SET, VALUE AND IMPACT.



PLACE-BASED AHP ACCESS AND SUPPORT; RIGHT SKILL, RIGHT TIME AND RIGHT PLACE TO MEET PRESENTING NEEDS.

DELIVERING A POPULATION NEEDS FOCUSED SERVICE



MULTI-PROFESSIONAL WORKING SUPPORTED THROUGH DATA AND DIGITAL SOLUTIONS

TIME TO PREPARE & PLAN SERVICES, TIME TO COLLECT DATA, AND SKILLS DEVELOPMENT TO UTILISE DATA, TO IMPROVE SERVICES WITH AN OUTCOMES-FOCUSED APPROACH.

COLLABORATION OPPORTUNITIES INTERNAL & EXTERNAL TO SUPPORT AND DEVELOP EARLY INTERVENTION / PREVENTION SERVICES INCLUSIVE OF AHPs.

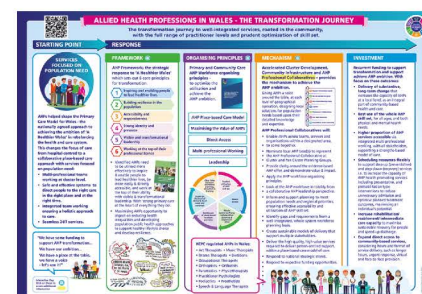


IMPROVED HEALTH AND WELLBEING; FOR POPULATION AND AHP WORKFORCE.

Q4. WHAT DOES SUCCESS LOOK LIKE, AND HOW WILL YOU MEASURE THIS?



VIEW OUR AHP TRANSFORMATION JOURNEY INFOGRAPHIC



REVIEW UNDERGRADUATE EDUCATION/PLACEMENTS; FOCUS ON SKILLS DEVELOPMENT FOR AHPs TO SUPPORT DEVELOPING DIRECT ACCESS MODELS.

CARE HOME
UNDERSTAND POPULATION NEEDS AND CLUSTER WORKING; LEADERSHIP DEVELOPMENT TO WORK IN PARTNERSHIP WITH OTHERS.