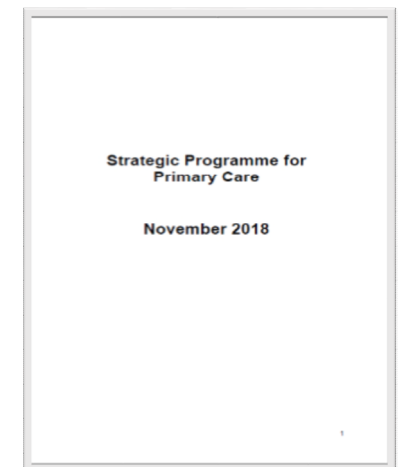


# The Strategic Programme for Primary Care



An All-Wales Health Board-led programme  
that works in collaboration with  
Welsh Government and  
responds to *A Healthier Wales*.



# The Primary Care Model for Wales

- Setting the Direction (2010)
- Primary Care Plan for Wales (2015 -2018)
- Parliamentary Review of Health and Social Care in Wales (Jan 2018)
- A Healthier Wales (June 2018)
- Strategic Programme for Primary Care (Nov 2018)

## Cluster Working

*“A cluster brings together all local services involved in health and care across a geographical area, typically serving a population between 25,000 and 100,000.*

*Working as a cluster ensures care is better co-ordinated to promote the wellbeing of individuals and communities”*

# Key Messages (*A Healthier Wales*)



- Get better at measuring what really matters to people
- Greater emphasis on wellbeing
- Health and Social Care will work together..... joined up and scaled up
- Work as a single system, everyone working together
- Invest in new technologies
- Shift services out of hospitals into the community
- Implement the Primary Care Model for Wales

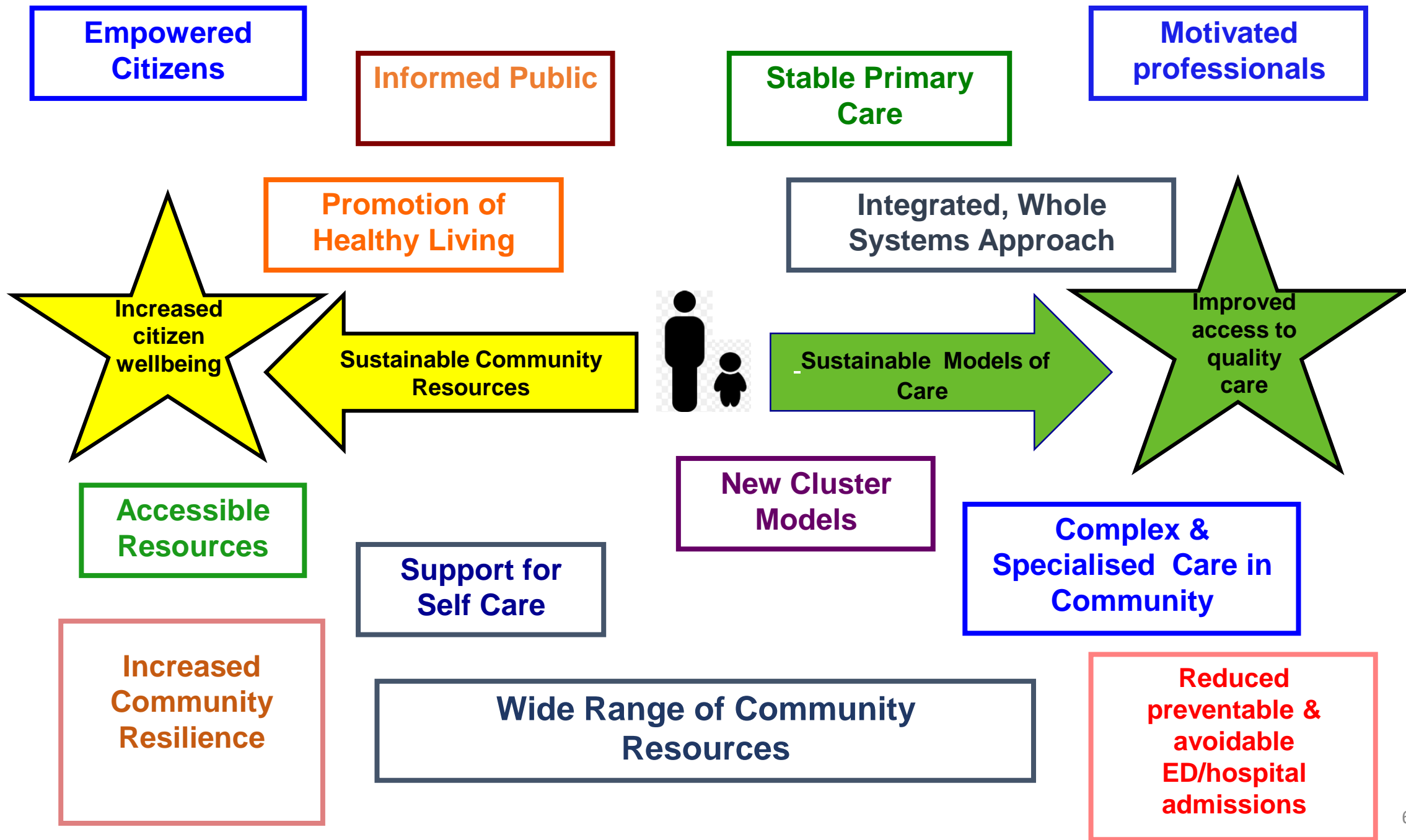
# Primary Care Model for Wales

*Informed by Pacesetter Programme (2015-18) – 24 projects on ‘once for Wales’ basis*

1. Multidisciplinary teams working at cluster level are the way forward
2. Safe & effective systems to direct people to the right person / team at the point of contact
3. Integrated teams ensure a holistic approach to care - physical, mental and social well-being
4. Services must work well across in- and out-of-hours to ensure seamless care
5. Success also depends on an informed public who have access to a range of community services

# The Transformation Required

- The most cost effective way of improving health and well-being to the practice population is no longer the traditional GP model
- Role of 'high street' needs to grow – change from business to service
- Wider community infrastructure – health and social care
- Place based care



# Strategic Programme for Primary Care

*'Primary Care response to A Healthier Wales'*

1. Six Key Work Streams:



2. Seamless Working

3. Primary Care Contract Reform



# **and delivery mechanism**

## ✓ **Socialising the programme:**

- Soft launch of Strategic Programme at National Primary Care Conference, Nov 18.
- 60+ meetings / presentations across Wales.

## ✓ **Programme Support:** Senior Programme Manager and project managers appointed.

## ✓ **Leadership:** DPCC Lead and 'expert' Co-Lead. Strategic Programme Board established.

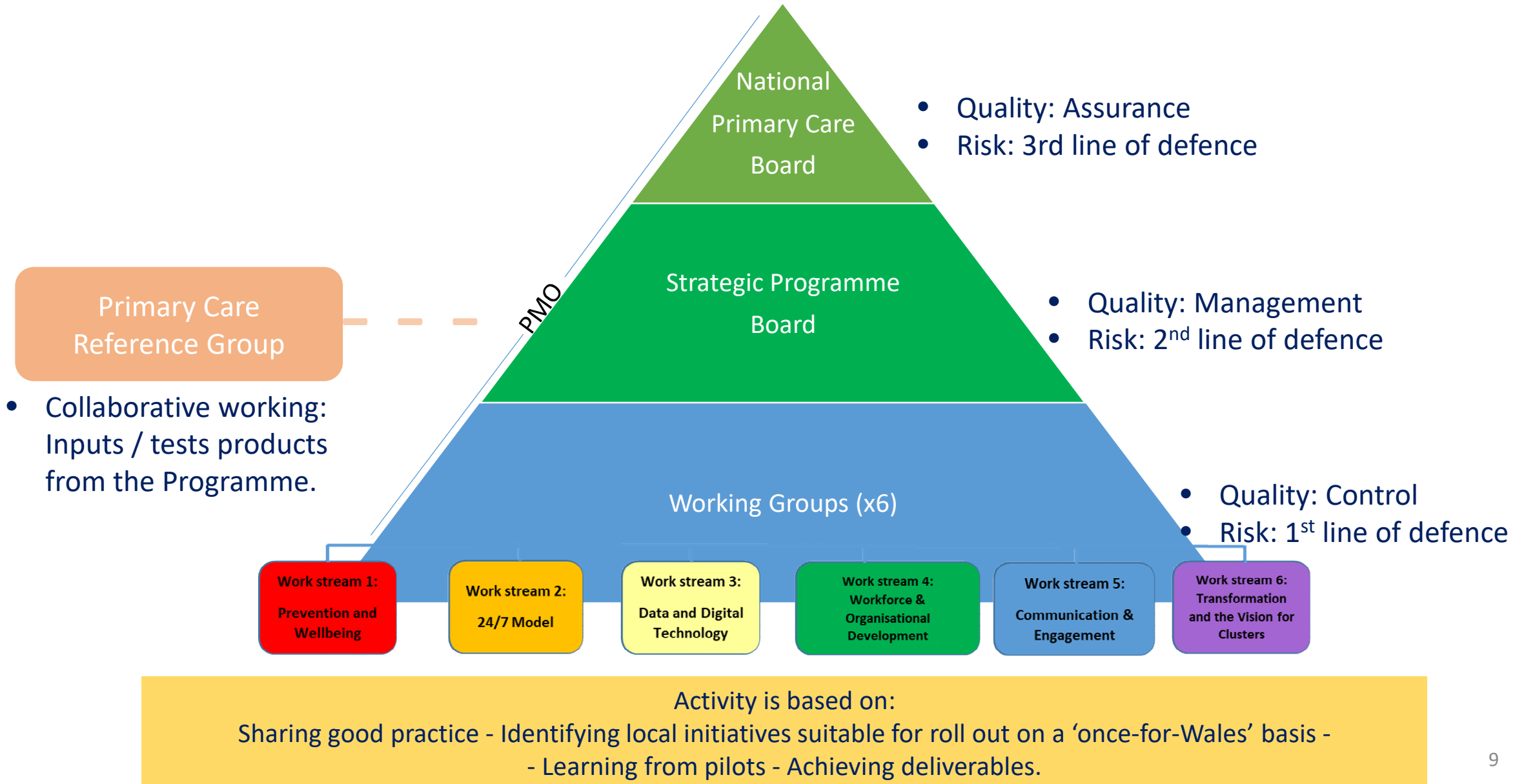
## ✓ **Work streams set-up:** project briefs approved, **Project Initiation Documents** completed.

## ✓ **Transition** from 'Initiation Stage' to fully operational and **highlight reporting**. First programme highlight report presented to National Primary Care Board Sept 19.

## ✓ **Early products delivered** and website to be launched Nov 2019.

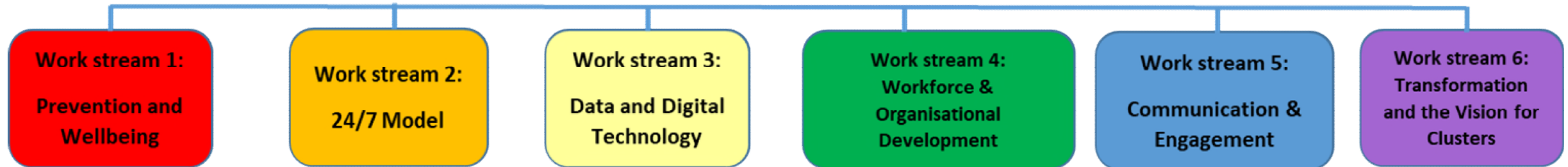


# How does the Programme work?



# The Strategic Programme

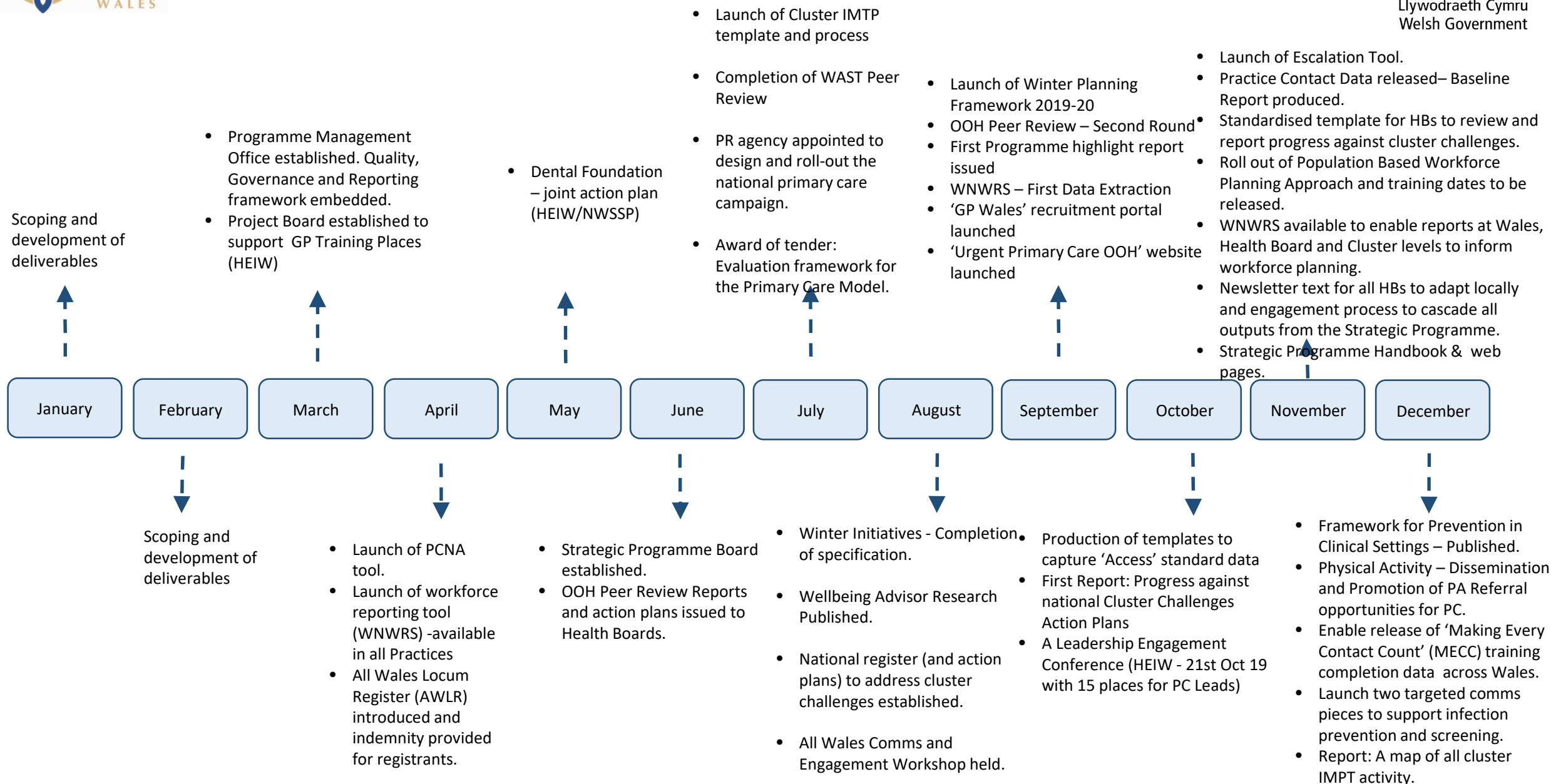
## work streams:

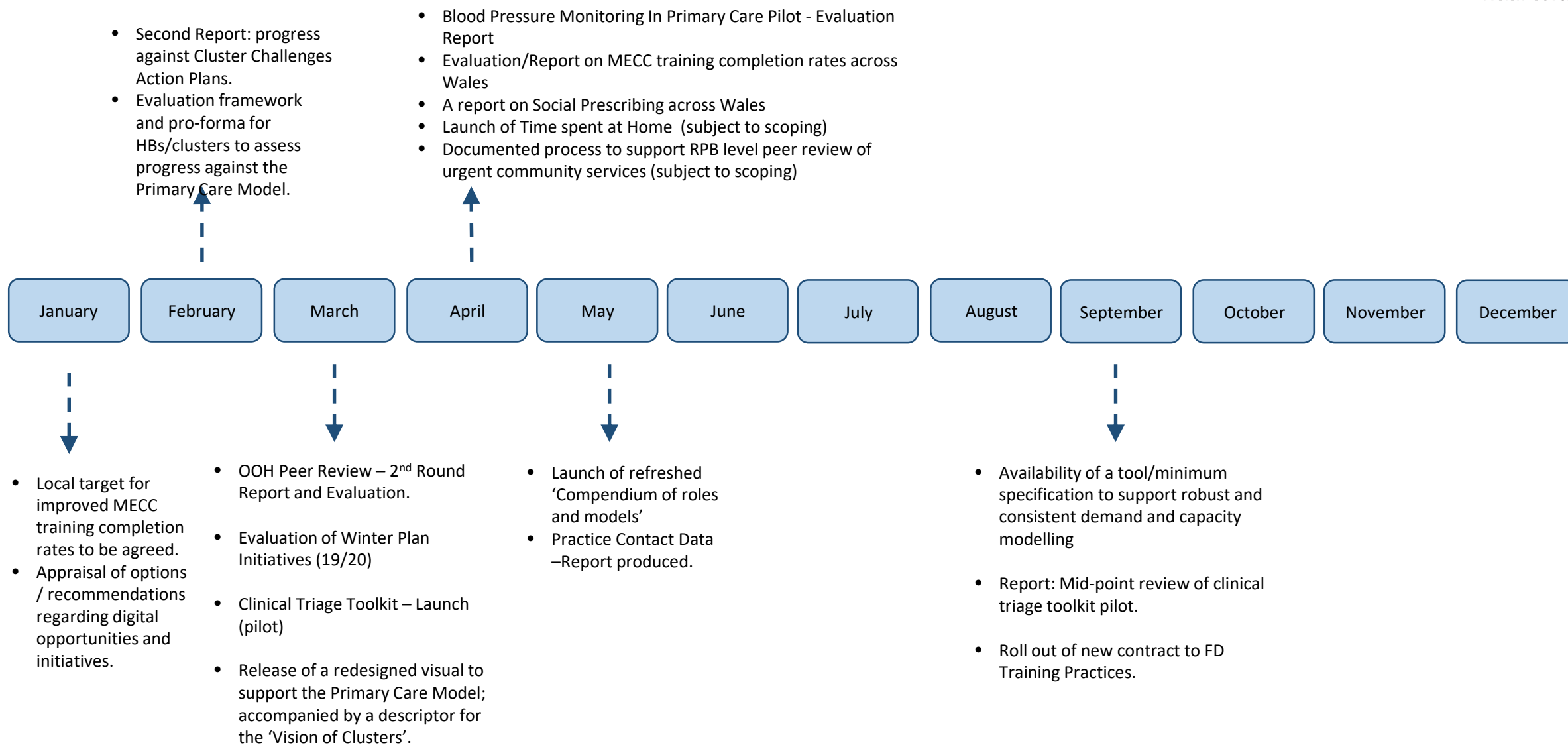


Programme	Strategic Programme for Primary Care	
Reporting Lines	<b>National Primary Care Board</b> (via Strategic Programme Board)	
Work Stream	1. Prevention & Well-being	2. 24 / 7 Model
Areas in Scope	<ul style="list-style-type: none"> <li>• Information to citizens</li> <li>• Social Prescribing</li> <li>• Prevention in clinical and non clinical settings</li> <li>• Population segmentation and risk reduction</li> <li>• Maximising opportunities to support national programmes (MECC, <i>Building A Healthier Wales</i>)</li> </ul>	<ul style="list-style-type: none"> <li>• Telephone first / Sign-posting / Triage Urgent Care</li> <li>• Escalation Processes</li> <li>• Services in the Community</li> <li>• 111 Roll out</li> <li>• OOH Pathways</li> <li>• Winter Planning Framework</li> <li>• Management of Rising Risk</li> </ul>

Programme	Strategic Programme for Primary Care	
Reporting	National Primary Care Board (via Strategic Programme Board)	
Work Stream	3. Data & Digital Technology	4. Workforce & Organisational Development
Areas in Scope	<ul style="list-style-type: none"> <li>• Systems – current (e.g. MHOL) &amp; new (e.g. WCCIS)</li> <li>• Information – data availability and data sharing</li> <li>• Technology – enabling a mobile workforce, assistive technology</li> </ul>	<ul style="list-style-type: none"> <li>• MDT Review</li> <li>• Workforce planning &amp; demand capacity modelling (inc. national workforce tool)</li> <li>• A good place to work</li> <li>• Role development</li> <li>• Education, training and skills</li> <li>• Sharing best practice</li> </ul>

Programme	Strategic Programme for Primary Care	
Reporting	National Primary Care Board (via Strategic Programme Board)	
Work Stream	5. Communications & Engagement	6. Learning from Transformation & Vision for Clusters
Areas in Scope	<ul style="list-style-type: none"> <li>• Phase 1 – general awareness inc user friendly articulation of model and raising public awareness via PR campaign</li> <li>• Phase 2 –behavioural / culture change</li> <li>• Engagement at local level</li> </ul>	<ul style="list-style-type: none"> <li>• Identify barriers for clusters to develop at pace</li> <li>• Work with external stakeholders to identify areas of alignment</li> <li>• Alignment with national programmes (e.g. Transformation Programme, Clinical Plan, Value Based Healthcare)</li> </ul>







# Find out more



[www.primarycareone.wales.nhs.uk/strategicprogramme](http://www.primarycareone.wales.nhs.uk/strategicprogramme)



**Follow us:** @SPPCWales



[Enquiries.strategicprogramme@wales.nhs.uk](mailto:Enquiries.strategicprogramme@wales.nhs.uk)

**Read the handbook  
(available via the webpages)**

